

FERNANDINA HARBOR NASSAU COUNTY, FLORIDA HYDROGRAPHIC EXAM SURVEY FY21 28, 35 & 36-FOOT PROJECT

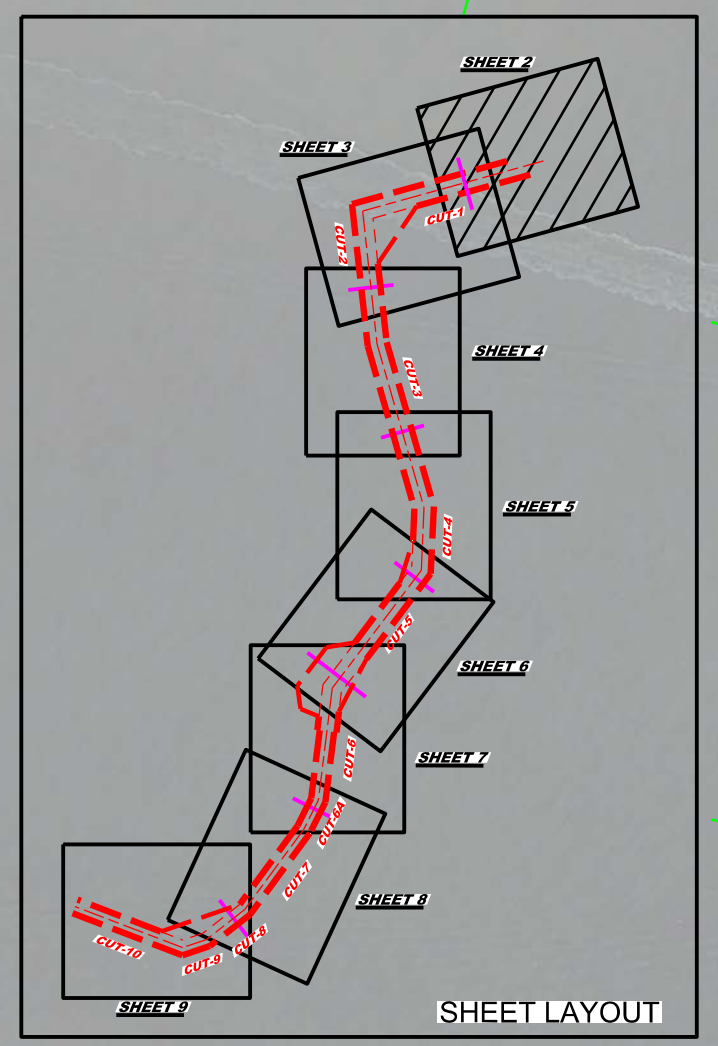
SURVEY NOTES

- REFER TO SURVEY NO. 21-218.
 - DEPTHS DEPICTED BY THIS SURVEY ARE REFERENCED TO MLLW, TIDAL EPOCH 1983-2001, AS PUBLISHED BY THE NATIONAL OCEANIC AND ATMOSPHERIC ADMINISTRATION (NOAA).
 - NOAA'S VDUTUM MODEL, AND PUBLISHED TIDE STATION DATA, WERE USED TO GENERATE A HYPACK KINEMATIC TIDE DATUM (KTD) MODEL. THIS KTD MODEL, BEING A COMBINATION OF THOSE TWO SOURCES, CANNOT BE CONSIDERED EQUIVALENT TO THE VDUTUM MODEL BECAUSE OF POSSIBLE ADDITIONS OR EDITS THERETO. DO NOT USE VDUTUM IN PLACE OF THE KTD FILE. THE KTD MODEL USED FOR THIS SURVEY IS:
"CAMDENGA-NASSAU-DUVAL-STJOHNS-FLAGLER_20191202.KTD"
 - TIDAL REDUCTIONS WERE OBTAINED UTILIZING A REAL-TIME KINEMATIC (RTK) GPS AND REFERENCED TO MLLW UTILIZING THE KTD FILE REFERENCED ABOVE, AND CALIBRATED TO THE PUBLISHED MLLW HEIGHTS OF THE BENCHMARKS ASSOCIATED WITH THE TIDE GAGE SITES SPECIFIED BELOW:
NOAA TIDAL STATION 872-0030, FERNANDINA BEACH, AMELIA RIVER, FL
 - ALL ELEVATIONS ARE BELOW THE CHART DATUM UNLESS PRECEDED BY A (+) SIGN.
 - PLANE COORDINATES ARE BASED ON THE TRANSVERSE MERCATOR PROJECTION FOR THE EAST ZONE OF FLORIDA AND REFERENCED TO NORTH AMERICAN DATUM OF 1983 (NAD83).
 - ALL STATIONING REFERS TO THE CENTERLINE OF THE CHANNEL.
 - THIS SURVEY WAS PERFORMED USING REAL-TIME KINEMATIC (RTK) GPS POSITIONING WITH THE FOLLOWING REFERENCE BASE LOCATION:
REFERENCE BASE LOCATED AT "BATH HOUSE ARP" (OPUS PID: BBC808) FOR CUTS 1 - 5
REFERENCE BASE LOCATED AT "RICHARD E BONNER" (OPUS PID: BBCK39) FOR CUTS 6 - 9
TIDE STAFF WAS SET ON THE SOUTH END OF THE CONSOLIDATED FUEL DOCK, NORTH OF FERNANDINA MUNICIPAL MARINA, FROM "RICHARD E BONNER" (PID: BBCK39)
 - VERTICAL MEASUREMENTS WERE MADE USING A RESON MODEL T20P MULTI-BEAM SYSTEM OPERATING AT 400 KHZ AND A ROSS SMART SOUNDER MODEL 835C WITH A DUAL-FREQUENCY 28200 KHZ SINGLE-BEAM TRANSDUCER. ALL SOUNDINGS SHOWN ARE IN HIGH FREQUENCY (400 KHZ).
- | VESSEL | DATE OF SURVEY | AREA SURVEYED |
|--------|----------------|---------------------------|
| SB-36 | 06 JUL 2021 | CUTS 1 THRU 5 |
| SB-36 | 08 JUL 2021 | CUTS 5, 6 & TURNING BASIN |
| SB-36 | 09 JUL 2021 | CUTS 6A THRU 9 (PARTIAL) |
- AIDS TO NAVIGATION WERE LOCATED DURING THIS SURVEY.
 - THE INFORMATION DEPICTED ON THIS MAP REPRESENTS THE RESULTS OF SURVEYS MADE ON THE DATES INDICATED ABOVE AND CAN ONLY BE CONSIDERED AS INDICATING THE GENERAL CONDITIONS AT THAT TIME. THIS CHART IS SOLELY FOR THE DISTRIBUTION OF AVAILABLE DEPTHS AT THE TIME OF THE SURVEY.
 - SURVEY ACCURACY PERFORMANCE STANDARDS, QUALITY CONTROL, AND QUALITY ASSURANCE REQUIREMENTS WERE FOLLOWED DURING THIS SURVEY IN ACCORDANCE WITH USACE EM 1110-2-1003, HYDROGRAPHIC SURVEYING, 30 NOV 2013 AND EM 1110-2-6056, STANDARDS AND PROCEDURES FOR REFERENCING PROJECT ELEVATION GRADES TO NATIONWIDE VERTICAL DATUMS, 31 DEC 2010.

LEGEND	
	MONUMENT
	LIGHTED BEACON
	GREEN DAYBEACON
	RED DAYBEACON
	RED LIGHTED BUOY
	GREEN LIGHTED BUOY
	CAN BUOY
	NUN BUOY
	TIDE STAFF
	PROJECT DEPTH

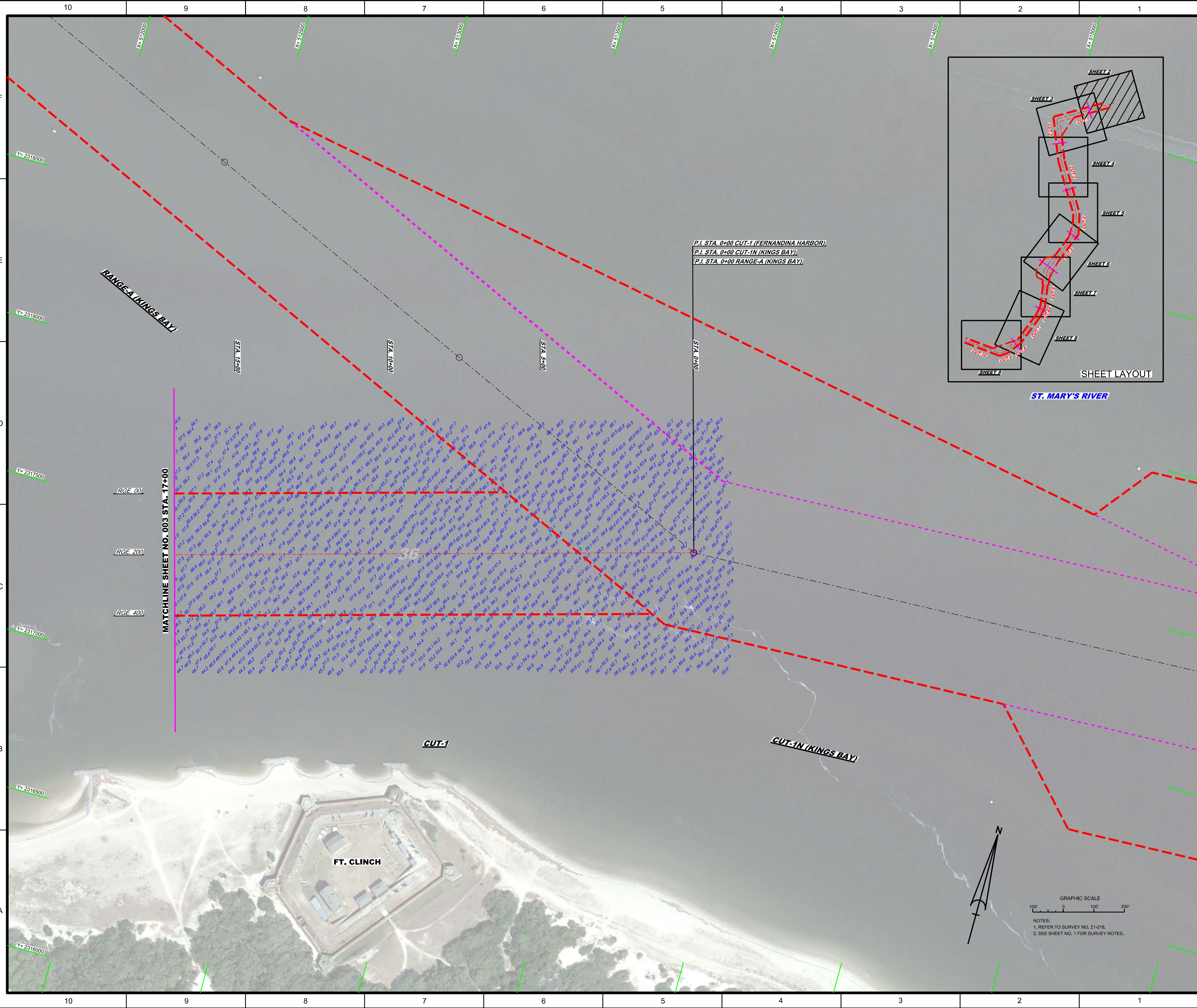
US Army Corps of Engineers
Jacksonville District
SAFETY ON THIS JOB
DEPENDS ON YOU

DESIGNED BY WRM	CHECKED BY GMR	DRAWN BY WRM	DATE JUL 2021	FILE NAME 21-218-INDEX.DGN 21-218-35-36-FOOT-PROJECT-INDEX-LOCATION-AND-VICINITY-MAP 21-218-35-36-FOOT-PROJECT-INDEX-LOCATION-AND-VICINITY-MAP
HYDROGRAPHIC EXAM SURVEY FY21 28, 35 AND 36-FOOT PROJECT INDEX, LOCATION AND VICINITY MAP				
Scale: AS SHOWN Drawing no. 1 SHEET 01 OF 09				



ST. MARY'S RIVER

P.I. STA. 0+00 CUT-1 (FERNANDINA HARBOR)
P.I. STA. 0+00 CUT-1N (KINGS BAY)
P.I. STA. 0+00 RANGE-A (KINGS BAY)



RANGE-A (KINGS BAY)

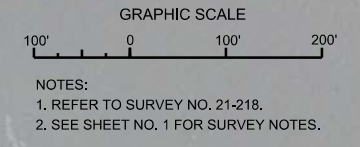
MATCHLINE SHEET NO. 003 STA. 17+00

RGE. 00
RGE. 200
RGE. 400

FT. CLINCH

CUT-1

CUT-IN (KINGS BAY)

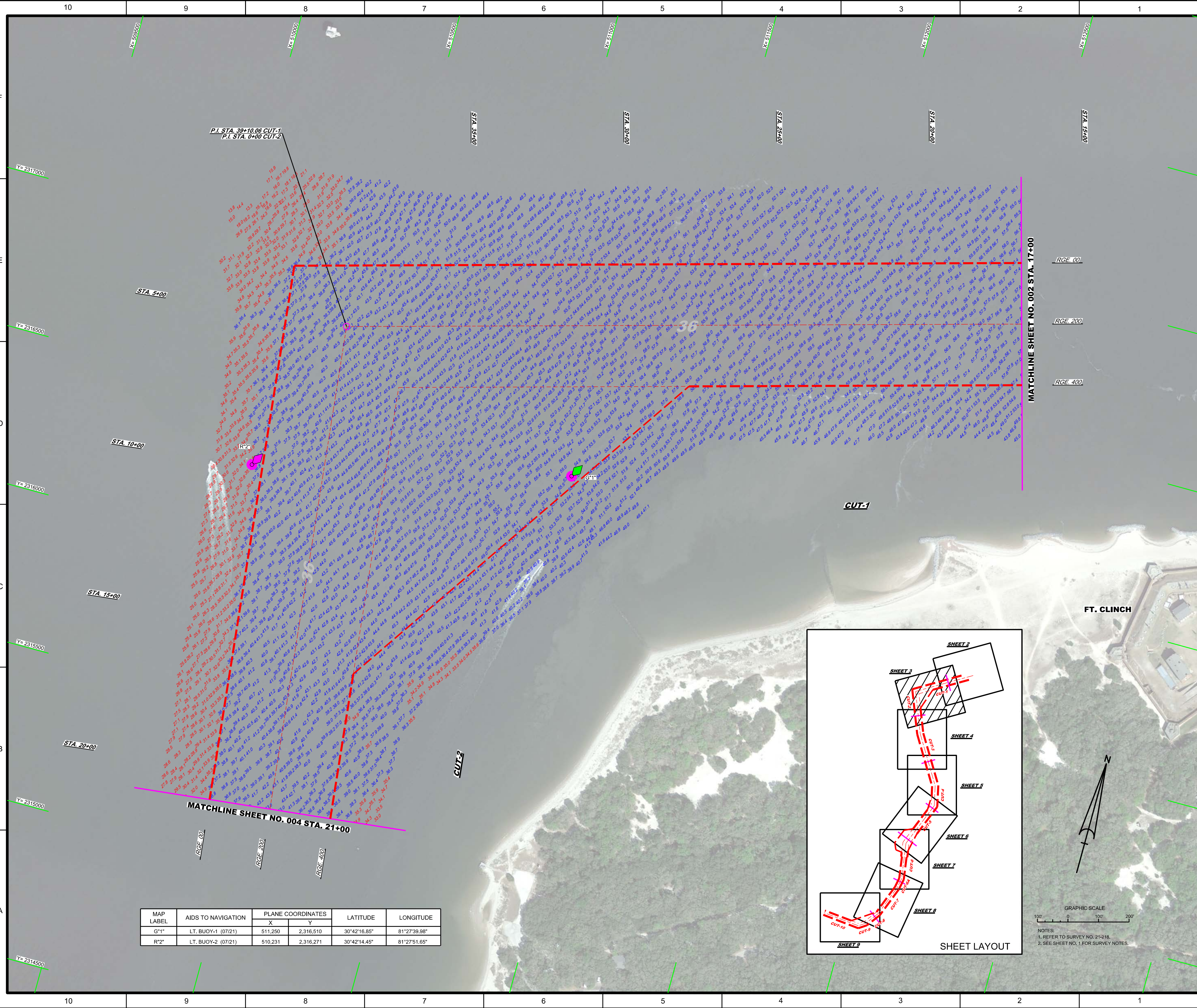


NOTES:
1. REFER TO SURVEY NO. 21-218.
2. SEE SHEET NO. 1 FOR SURVEY NOTES.

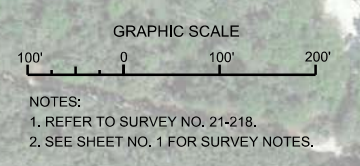
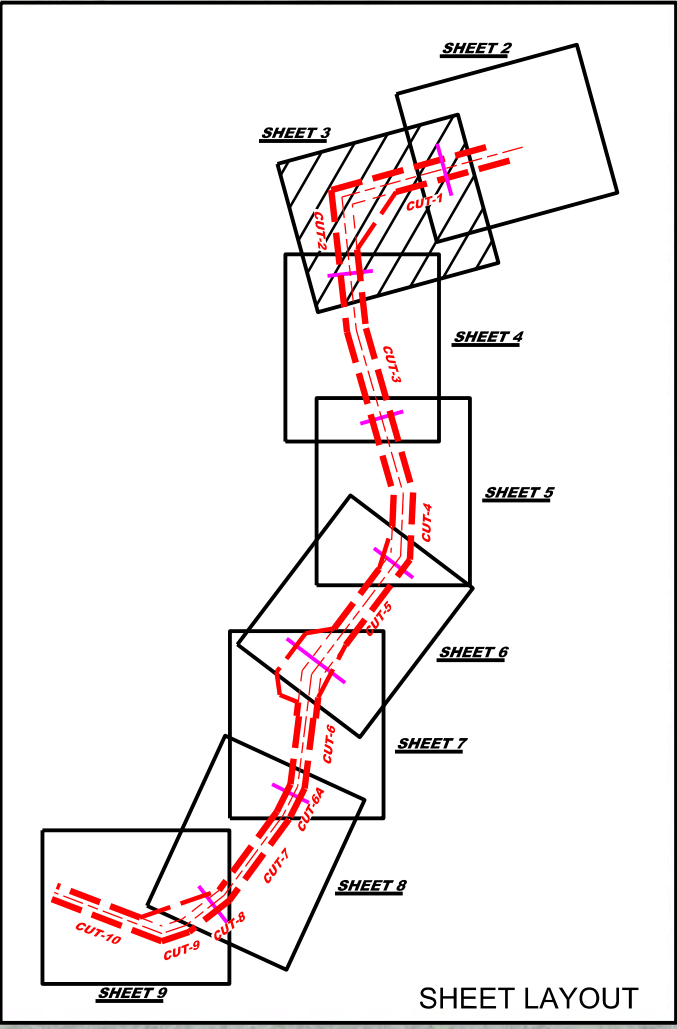
DEPARTMENT OF THE ARMY
 JACKSONVILLE DISTRICT, CORPS OF ENGINEERS
 JACKSONVILLE, FLORIDA

Project: 21-21-BAVAV-DGN
 Drawing: 21-21-BAVAV-DGN
 Date: 07/21/2021
 Scale: AS SHOWN


HYDROGRAPHIC EXAM SURVEY FY21
28, 35 AND 36-FOOT PROJECT
 STA. 0+00 THRU STA. 17+00 CUT-1
PLAN
 SHEET 03 OF 09



MAP LABEL	AIDS TO NAVIGATION	PLANE COORDINATES		LATITUDE	LONGITUDE
		X	Y		
G*1	LT. BUOY-1 (0721)	511,250	2,316,510	30°42'16.85"	81°27'39.98"
R*2	LT. BUOY-2 (0721)	510,231	2,316,271	30°42'14.45"	81°27'51.65"



MAP LABEL	AIDS TO NAVIGATION	PLANE COORDINATES		LATITUDE	LONGITUDE
		X	Y		
R*6"	LT. BUOY-6 (07/21)	511,448	2,310,567	30°41'18.03"	81°27'37.44"
G*7"	LT-7 (07/21)	511,982	2,310,635	30°41'18.73"	81°27'31.33"



US Army Corps of Engineers
Jacksonville District

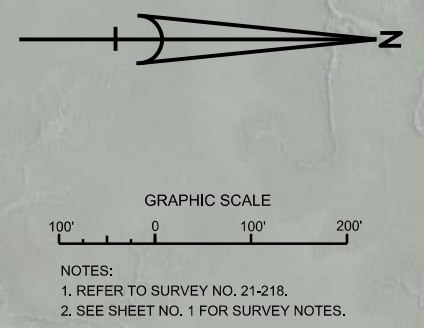
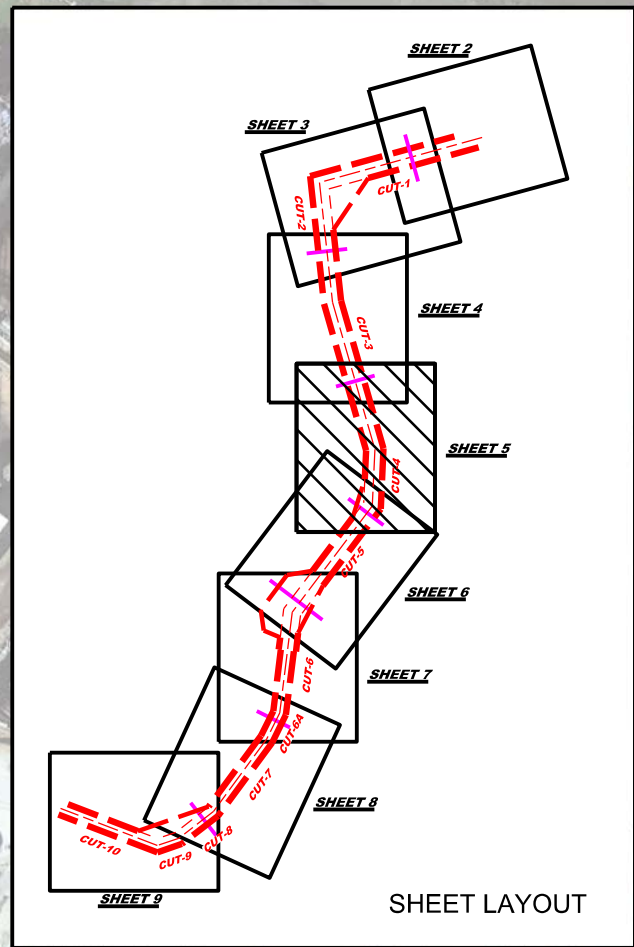
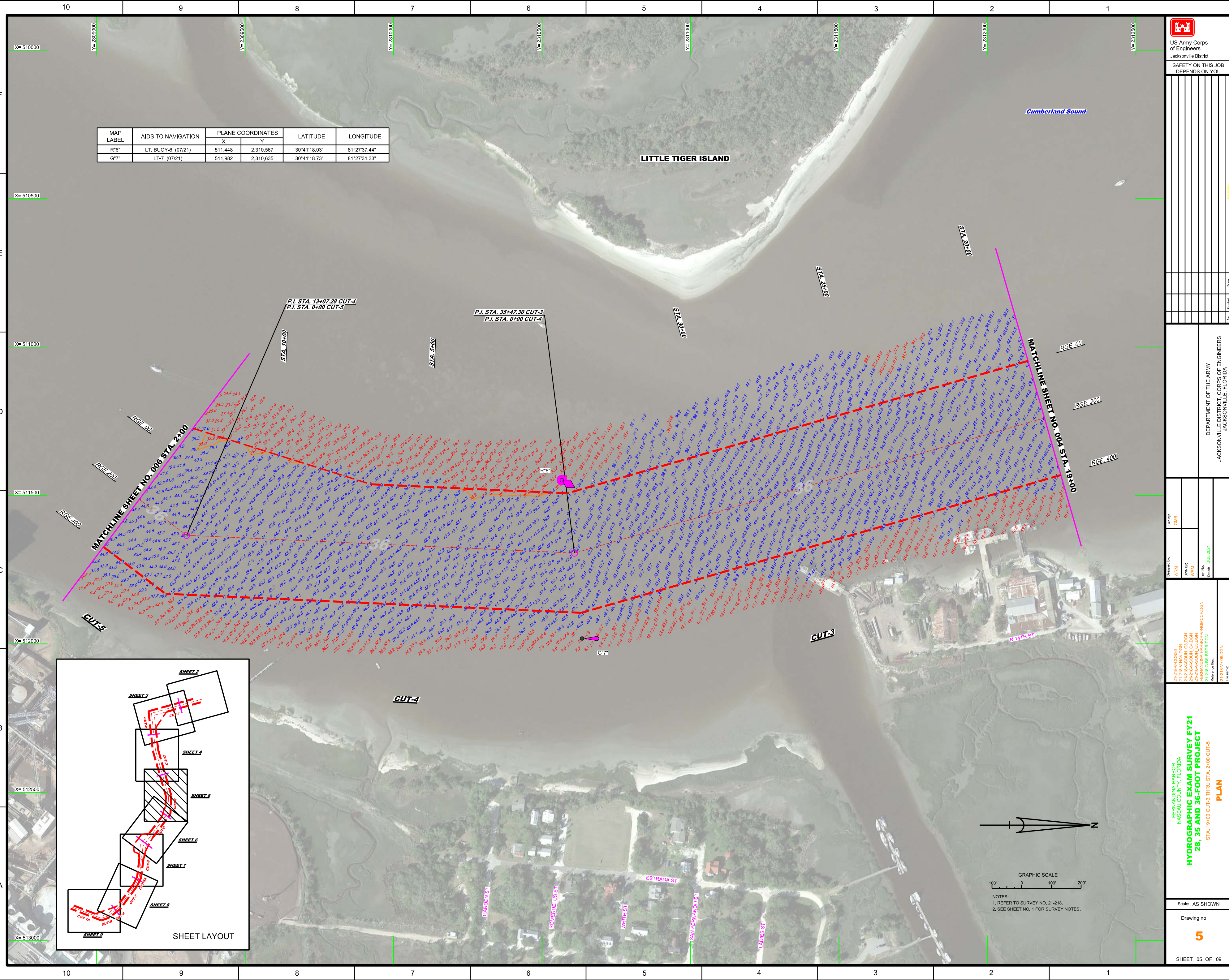
SAFETY ON THIS JOB
DEPENDS ON YOU

DEPARTMENT OF THE ARMY
JACKSONVILLE DISTRICT, CORPS OF ENGINEERS
JACKSONVILLE, FLORIDA

Drawn by: GHR
Checked by: GHR
Designed by: WRM
DWG No: WRM
Project No: WRM
Date: JUL 2021

FERNANDINA HARBOR
NASSAU COUNTY, FLORIDA
**HYDROGRAPHIC EXAM SURVEY FY21
28, 35 AND 36-FOOT PROJECT**
STA. 19+00 CUT-3 THRU STA. 2+00 CUT-5
PLAN

Scale: AS SHOWN
Drawing No. **5**
SHEET 05 OF 09



MAP LABEL	AIDS TO NAVIGATION	PLANE COORDINATES		LATITUDE	LONGITUDE
		X	Y		
R8*	LT. BUOY-8 (07/21)	510,993	2,308,998	30°41'02.49"	81°27'42.57"



Jacksonville District

SAFETY ON THIS JOB DEPENDS ON YOU

Name	Position	Date

DEPARTMENT OF THE ARMY
JACKSONVILLE DISTRICT, CORPS OF ENGINEERS
JACKSONVILLE, FLORIDA

Designed by: WRM
Checked by: GHR
Drawn by: WRM
Date: JUL 2021

PROJECT: 42-BA-CON/CDN
SUBPROJECT: 42-BA-NAV/CDN
DRAWING: 42-BA-SUB/SUB/CDN
DATE: JUL 2021

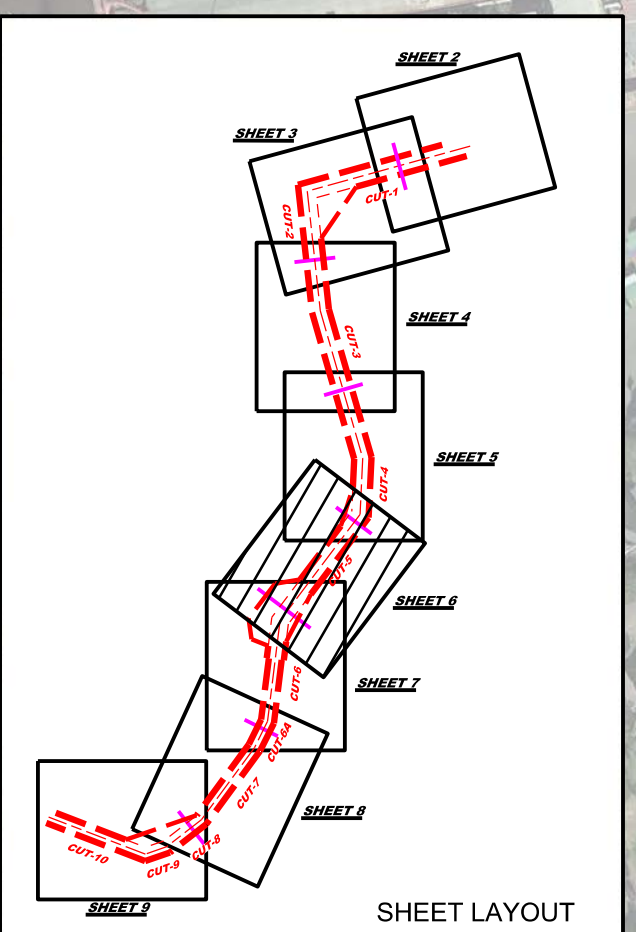
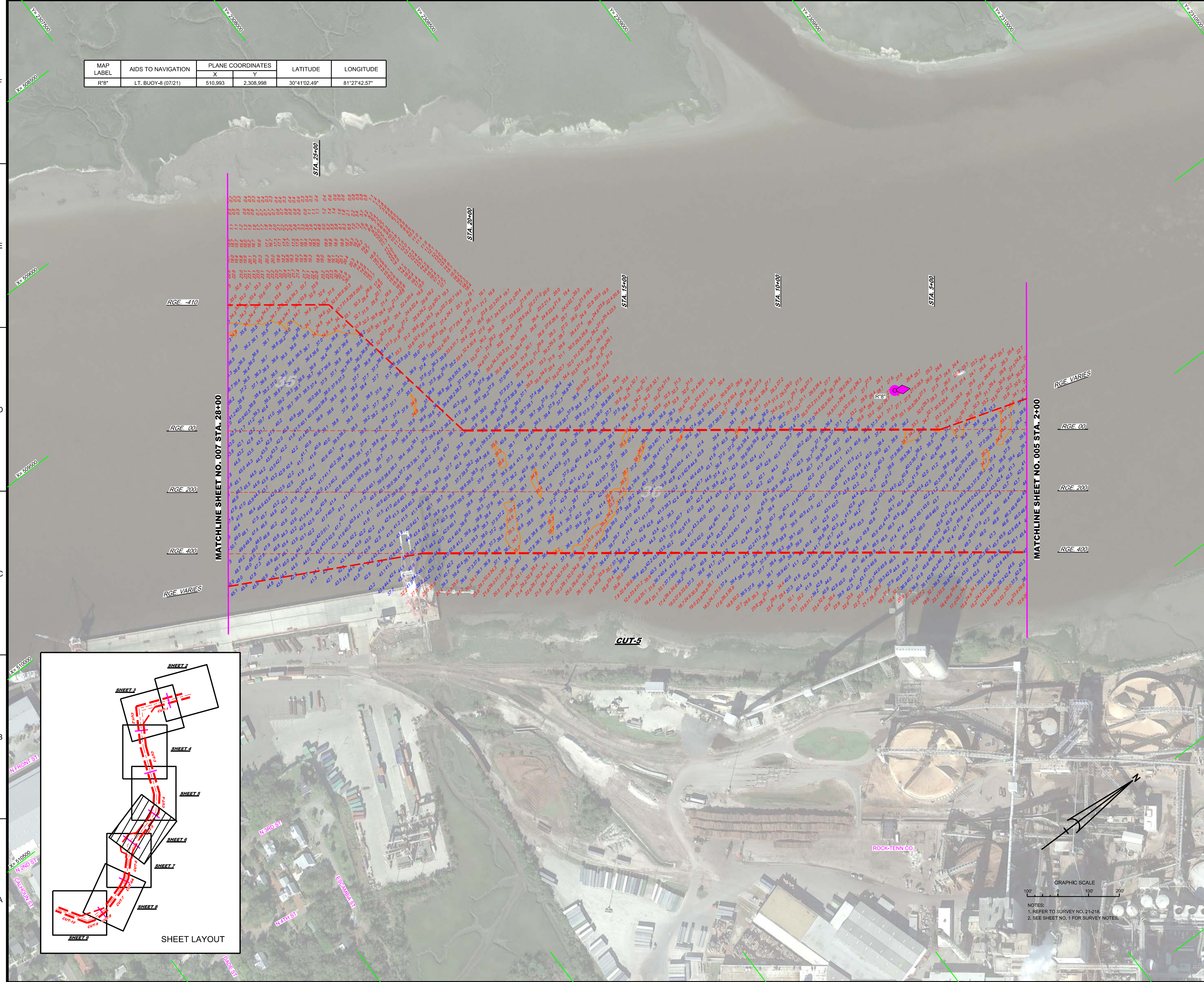
HYDROGRAPHIC EXAM SURVEY FY21
28, 35 AND 36-FOOT PROJECT
PLAN
STA. 2+00 CUT-5 THRU STA. 2+40

Scale: AS SHOWN

Drawing no.

6

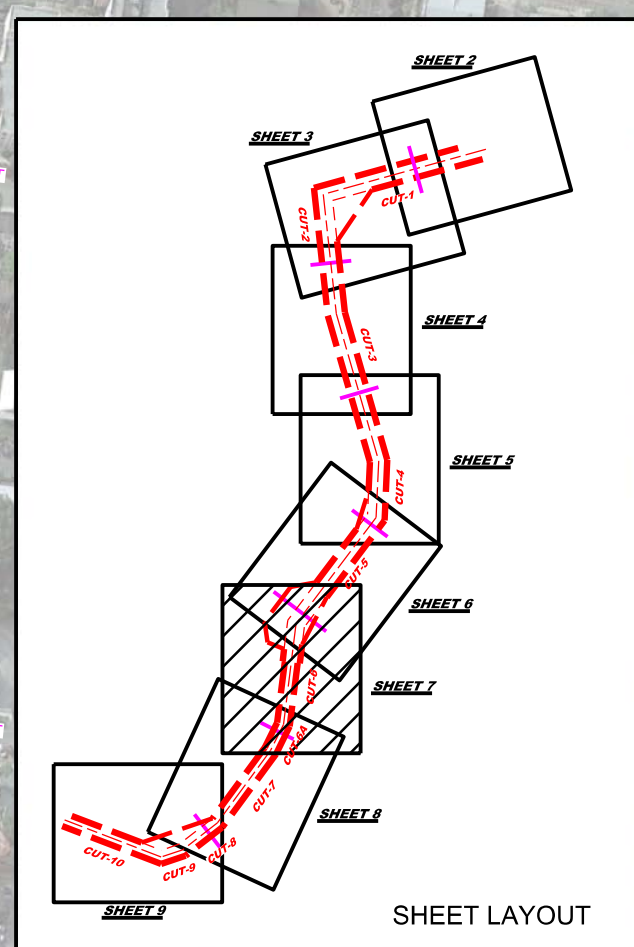
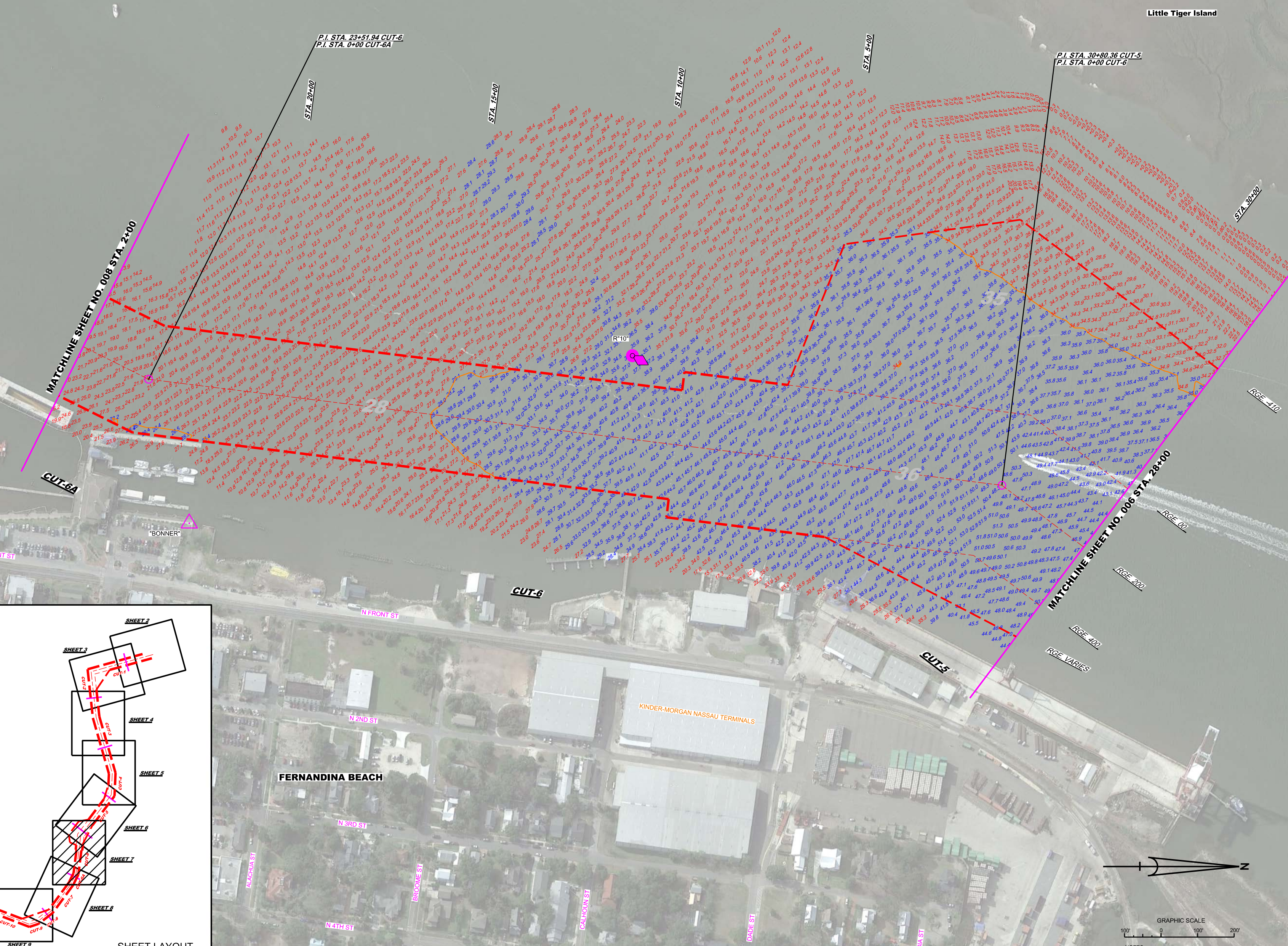
SHEET 06 OF 09



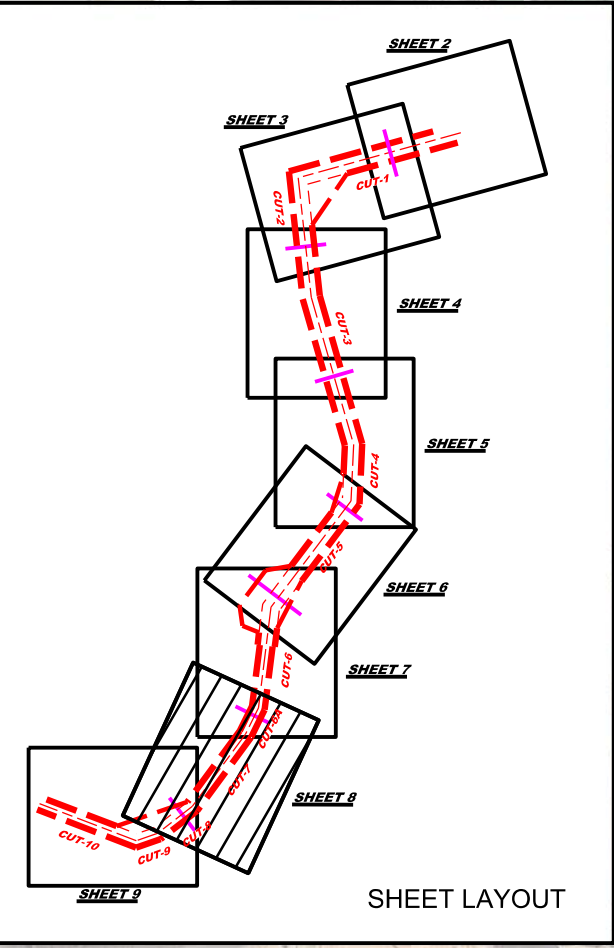
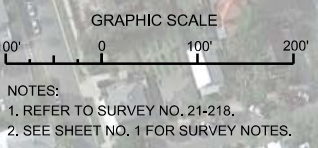
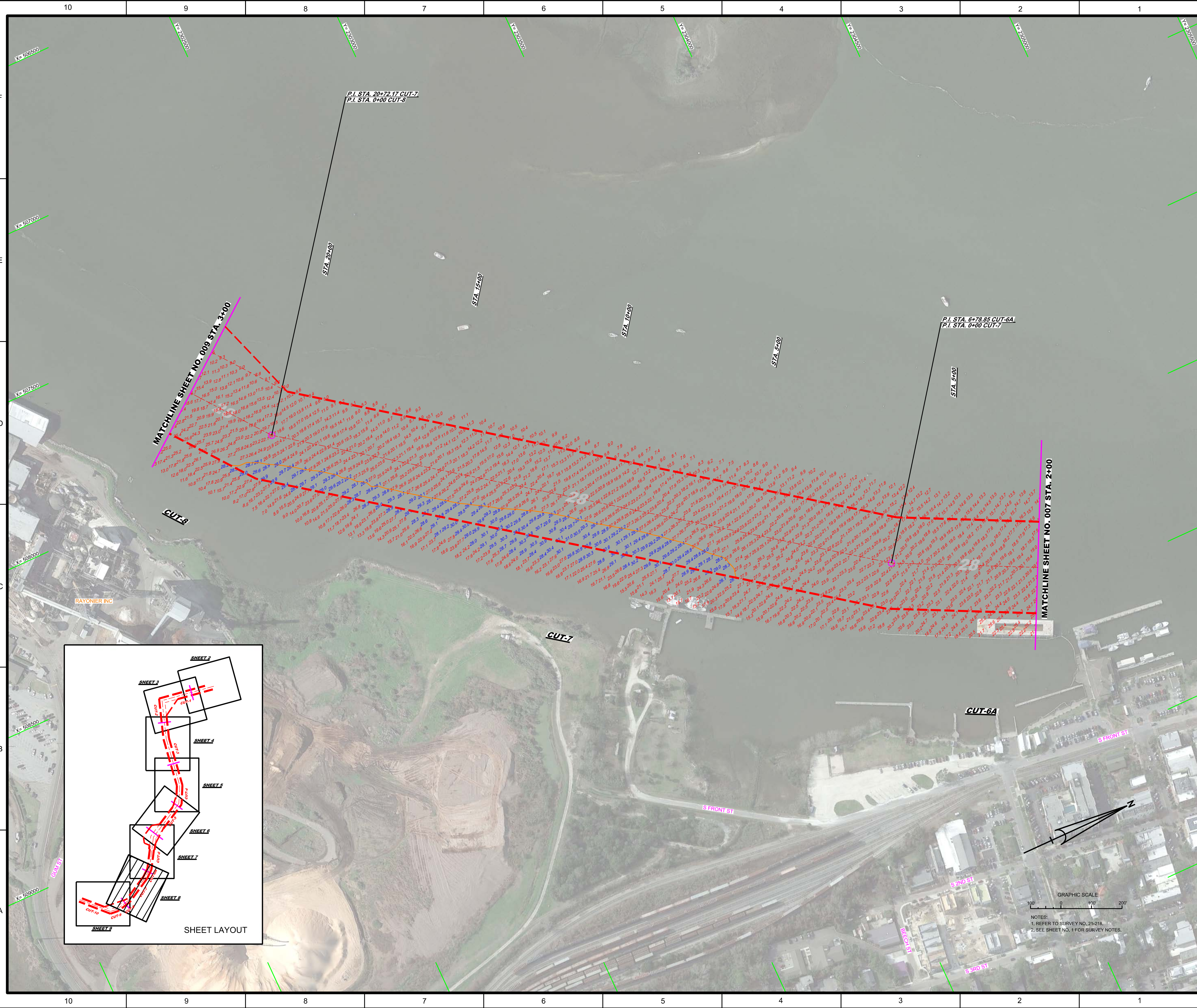
GRAPHIC SCALE
100' 0 100 200'

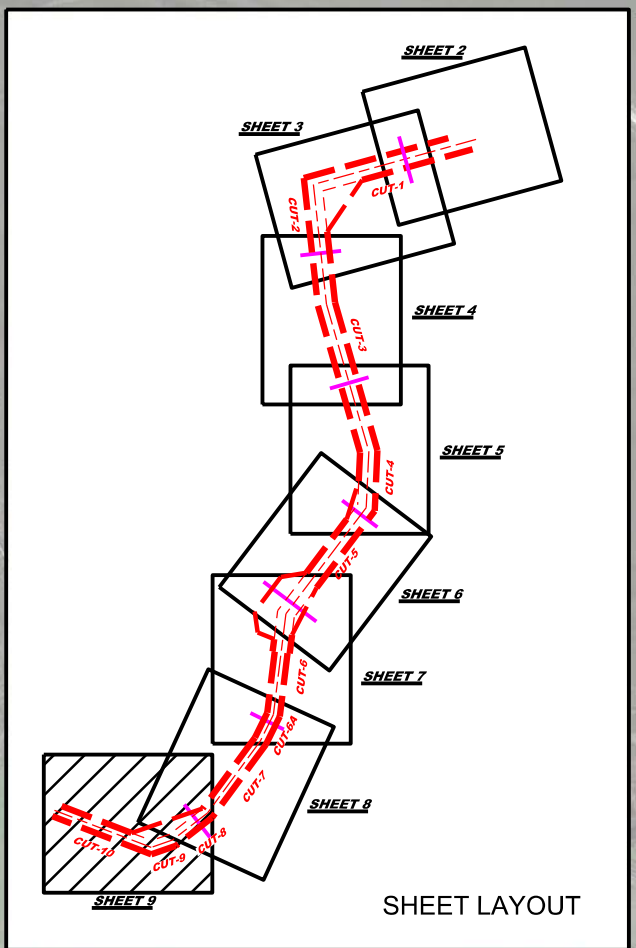
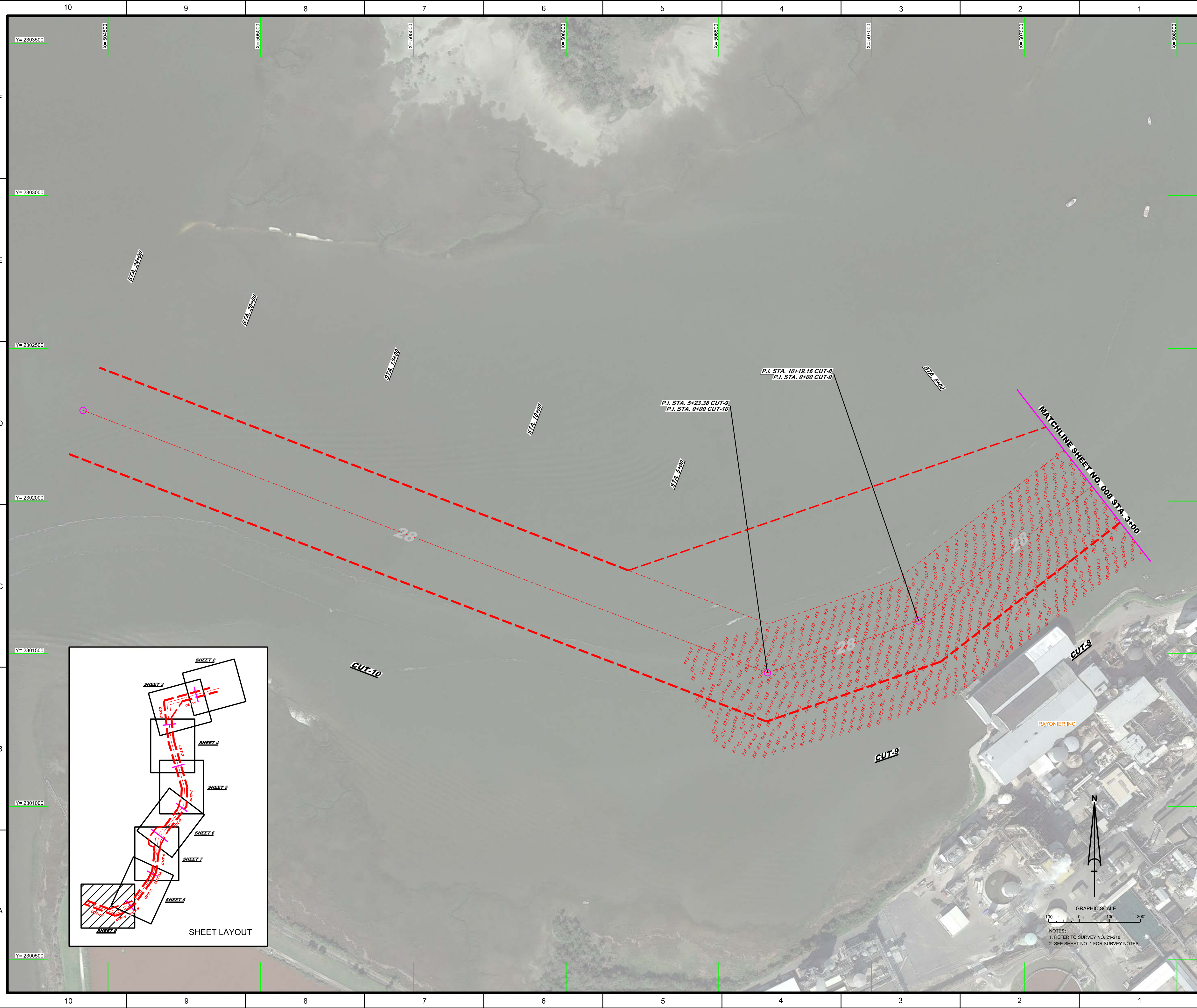
NOTES:
1. REFER TO SURVEY NO. 21-216.
2. SEE SHEET NO. 1 FOR SURVEY NOTES.

MAP LABEL	AIDS TO NAVIGATION	PLANE COORDINATES		LATITUDE	LONGITUDE
		X	Y		
R110	LT. BUOY-10 (07/21)	509,424	2,305,833	30°40'31.10"	81°28'00.39"



DESIGNED BY WRM	CHECKED BY GHR	DATE JUL 2021
DRAWN BY WRM	APPROVED BY WRM	
PROJECT NO. 21-218-VAN/JDN	PROJECT NAME FERNANDINA HARBOR NASSAU COUNTY, FLORIDA HYDROGRAPHIC EXAM SURVEY FY21 28, 35 AND 36-FOOT PROJECT	PROJECT LOCATION FERNANDINA HARBOR, FLORIDA
DATE JUL 2021	SCALE AS SHOWN	DRAWING NO. 7
SHEET 07 OF 09		





GRAPHIC SCALE
100' 0 100' 200'

NOTES:
1. REFER TO SURVEY NO. 21-218.
2. SEE SHEET NO. 1 FOR SURVEY NOTES.